

Registered office:

Glaslyn Court
Crickhowell Road
Gilwern
Gwent
NP7 0EH

Tel: 01873 830218

Fax: 01873 832885

Registered No: 2113534



Glaslyn Retirement Homes Limited



Index:

- Introduction
- Facilities
- Rooms
- Countryside
- Accommodation

Contact:

Tel: 01873 830218
Fax: 01873 832885
Email: glaslynh@glaslynresidential.co.uk - General Enquiries
beverley@glaslynresidential.co.uk - Home Manager
deborah@glaslynresidential.co.uk - Administration

Introduction:

The philosophy of the Glaslyn Group is to give the highest standard of nursing care and the best quality of life for all our residents.

Glaslyn Court is registered with the local authorities; and caters for the different needs of the individual. The home has four different units; each unit is under the control of a Lead Nurse and a dedicated team of carers, who have been hand chosen for their warm, friendly and homely attitudes.

Glaslyn Court is owned by Mrs O P Wright, who has worked as a health care professional all through her working career. Mrs Wright was promoted to Senior Nursing Care Officer for the Blaenau Gwent area.

The Home Manager is Beverley Evans, an experienced RGN who supports each unit. The administration of Glaslyn Court is the responsibility of Mrs Deborah Evans.

It is our policy to respect the dignity, privacy, independence of our residents and their families at all times.



Facilities:

Glaslyn Retirement Home is committed to providing the very highest levels of care and service. To achieve this, each aspect of our facility is designed to meet the needs of our residents:

- **Staff:** Glaslyn Retirement Home has a large workforce, including nurses, carers, domestics, kitchen staff and maintenance staff. We also have Activity Coordinators who encourage participation in person centred activities, through out each area.

- **Equipment:** There has been significant investment in care equipment such as hoists, lifts and beds, meeting the needs of our residents.

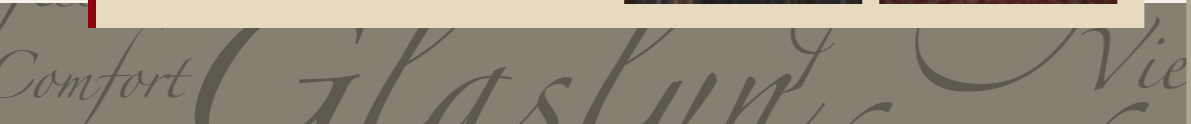


- **Experience:** The staff at Glaslyn Retirement Home have a wealth of experience and qualifications. We operate a continuing programme of training, which all staff participate in to ensure their skills and knowledge are up to date.

- **Food:** Our highly experienced Chef offers exciting and nutritionally balanced meals, which are freshly prepared on site.

- **Visiting:** We operate an open door policy, actively encouraging visiting. There are spacious lounge areas throughout.

- **Companionship:** The warm, welcoming atmosphere and communal rooms allow for a strong degree of social interaction.

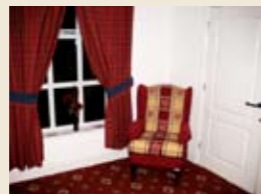


Court
Relax

Rooms:

The rooms are comfortably furnished, each with en suite facilities.

Rooms are decorated regularly, ensuring they are fresh and contemporary.



Countryside:

Glaslyn is situated in the picturesque heart of the Welsh countryside.

The surrounding area offers some fantastic views and scenery.



unity
rdg

Co
At
e Warm

nden
Persona
tge

Accommodation:



Glaslyn Court Retirement Home:

Glaslyn Court opened in 1983 as a residential home for 18 residents. It is now registered as a nursing home for 73 residents.

Glaslyn Court is also registered for 25 residents who require General Medical Nursing Care, under the care and expertise of RGN's and Carers.



Caleb's Court:

Opened in 2007, Caleb's Court is a modern facility, offering first class EMI Nursing care. The building has 21 en-suite rooms, a lift between floors and stunning views of the surrounding countryside.

Care *Personal*
Heritage
Warmth
Equipment
Lifestyle
Residential

Relaxing *Community*
The Lodge
Views
Glaslyn
Independence
Personal

Glaslyn Lodge:

The Lodge is a specialised unit for psychiatric patients under the age of 65. It provides a high degree of independence, whilst still being supported by the care and expertise of trained RMN's and carers.



Residential Elderly Mentally Infirm:

The Residential Unit offers the necessary care and support required to meet individual needs under the direct supervision of suitably qualified carers all with NVQ qualifications.



Accommodation:

Respite care:

Glaslyn Court offers respite care. This short term facility allows residents to convalesce in a comfortable and relaxing environment.



The Local
Expertise
Glaslyn
Partnership Independence
Personal
Heritage

The Director and staff of Glaslyn Retirement Homes Ltd are proud of the service and reputation we have built up over the last 25 years.

Whilst we hope this brochure will give you some idea of the services we offer, it cannot be expected to compare with a personal visit, and because of our 'open door' policy, we would be pleased to see you at any time.

